



# ROSE TARLOW

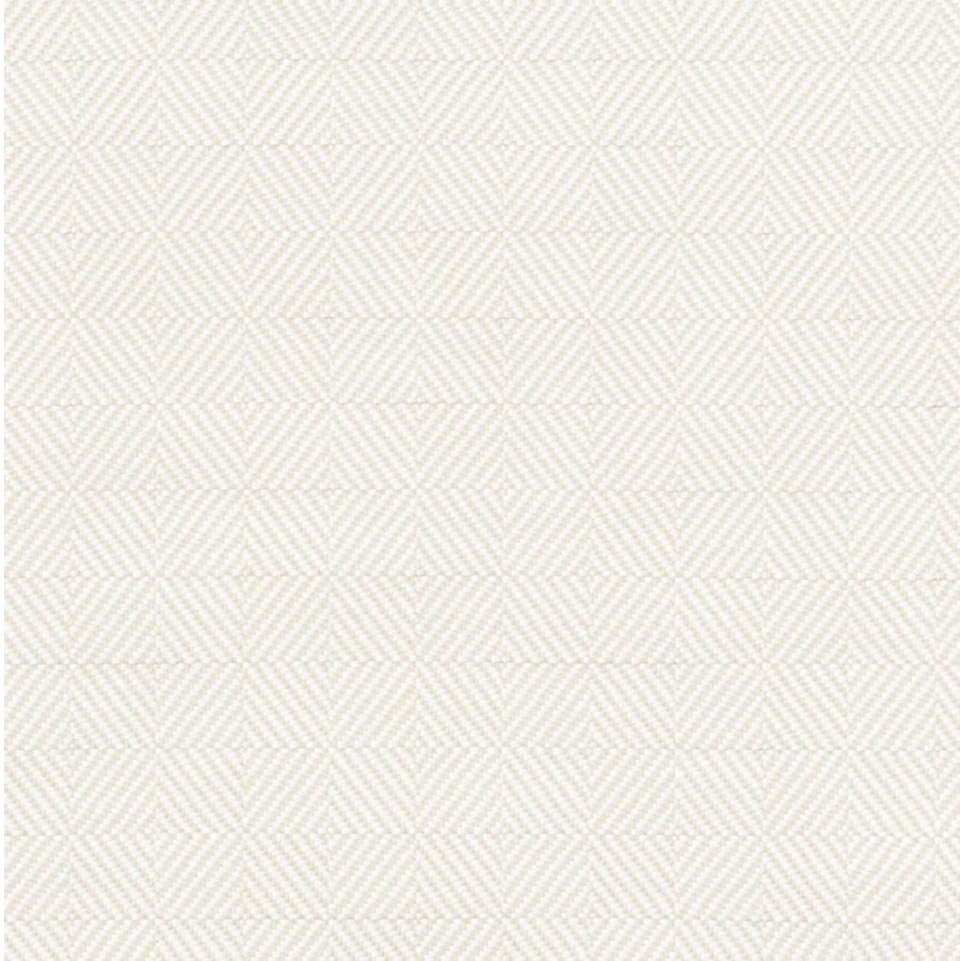
MELROSE HOUSE

425 N Robertson Blvd  
Los Angeles, California 90048

T 323 651 2202

F 323 658 6548

[sales@rosetarlow.com](mailto:sales@rosetarlow.com)



## CHELSEA SQUARE Sea Salt

765-124

- 100% Solution Dyed Acrylic
- 54" Wide
- Repeat V 1.63" H 1.63"
- 7,000 double rubs. Rose Tarlow Melrose House for Perennials.